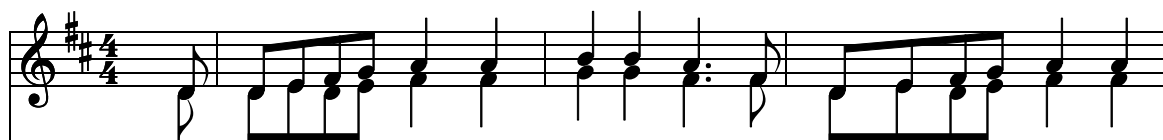


The Tree in the Wood

English Folk Song, arr. Rodgers

Soprano/Alto



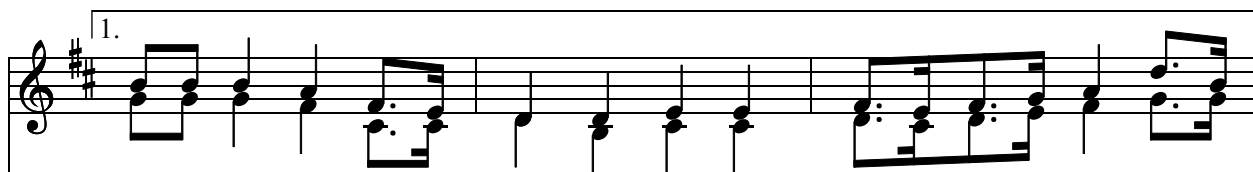
All in a wood there grew a tree, The finest tree you
And on this tree there grew a limb, The longest limb you
And on this limb there grew a branch, the broadest branch you
And on this branch there sat a nest, the prettiest little nest you
And in this nest there was an egg, the sweetest little egg you
And in that egg there was a yolk, the yellowest yolk you
And from that yolk there grew a bird, the loveliest bird you
And on that bird there was a wing, the fairest wing you
And on that wing there was a feather, the featheriest feather you

Tenor/Bass



All in a wood there grew a tree, The finest tree you
And on this tree there grew a limb, The longest limb you
And on this limb there grew a branch, the broadest branch you
And on this branch there sat a nest, the prettiest little nest you
And in his nest there was an egg, the sweetest little egg you
And in that egg there was a yolk, the yellowest yolk you
And from that yolk there grew a bird, the loveliest bird you
And on that bird there was a wing, the fairest wing you
And on that wing there was a feather, the featheriest feather you

S/A



e - ver did see, and the green leaves grew a - round, a-round, a-round, and the

T/B



e - ver did see, and the green leaves grew a - round, a-round, a-round, and the

S/A

green leaves grew a - round. e-ver did see, The limb was on the tree, the
 branch was on the limb, the
 nest was on the branch, the
 egg was in the nest, the
 yolk was in the egg, the
 bird was in the yolk, the
 wing was on the bird, the
 feather was on the wing, the

T/B

green leaves grew a - round. e-ver did see, The limb was on the tree, the
 branch was on the limb, the
 nest was on the branch, the
 egg was in the nest, the
 yolk was in the egg, the
 bird was in the yolk, the
 wing was on the bird, the
 feather was on the wing, the

S/A

tree was in the wood _____ And the green leaves grew a - round, a-round, a-round, and the

T/B

tree was in the wood _____ and the green leaves grew a - round, a-round, a-round, and the

S/A

green leaves grew a - round.

T/B

green leaves grew a - round.